



# Tri-County Two-Cylinder Club of Michigan

Established 1992

## JULY 2010 Newsletter

Online: [www.semichtwocylclub.org](http://www.semichtwocylclub.org)

**Ron Love**, President  
734-326-0446

**Josh Smith**, Co Vice-President  
734-788-8480

**Sam Brabant**, Co Vice-President  
734-483-7599

**Rona Hintz**, Secretary  
517-451-8020

**Jody Cannon**, Treasurer  
734-513-6728

### Washtenaw County Directors

John Kurschinski  
734-944-1254  
Don Hasselbach  
734-429-2321  
Bob Youtsey  
734-417-7759

### Wayne County Directors

August Wallman  
734-461-2315  
Scott Fry  
734-942-9162

### Monroe County Directors

Paul Emerson  
734-439-8589

### Out-County Directors

Jack Hintz  
517-451-8020  
Charles Burkholder  
517-467-7033

Sam/Barb Brabant, Membership  
734-483-7599

Paul Emerson, Website  
734-439-8589

Cari Fry, Newsletter  
734-942-9162  
[clf215@aol.com](mailto:clf215@aol.com)

Hello everyone,

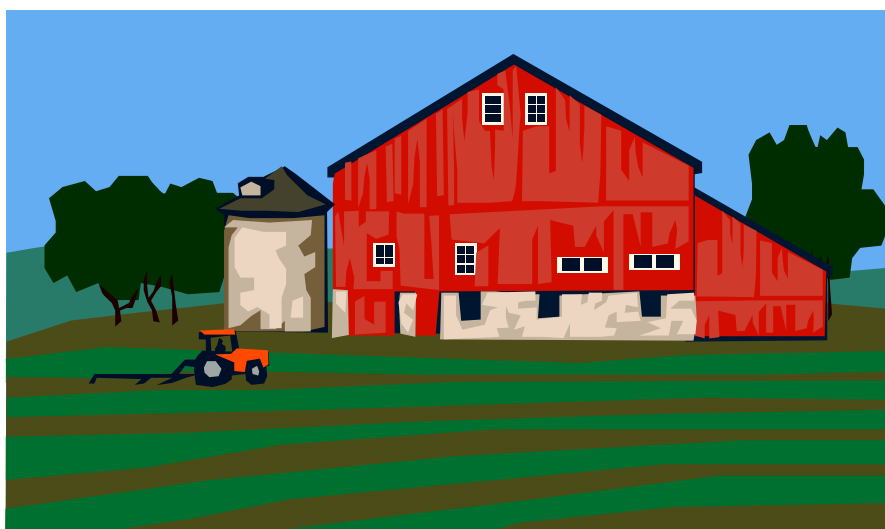
Well, due to the fact that no one but me was going to the Northville 4th of July parade, I did not go to the parade.

As you may or may not know, the club is having a club show on Saturday, July 31st at the ACE HARDWARE STORE at 19500 Sumpter Rd and Willis Rd in Belleville, MI. Set up is between 6:00am - 9:00am so come on guys... get those tractors out of the barns and bring them down for a great show! Show your club spirit! It will be a day of fun and good fellowship of old friends and new ones too! After all, this is YOUR club... let's get-r-done! :)

For the show, we will be having the kid's Kiddie Pull with the mini weight machine and with ribbons and trophies and all. Fun! The show is dedicated to the Farmers of Southeast Michigan so let's see some club spirit out there.

Norm & Scott Fry and myself went to the Thresher's Reunion Show in Wauseon, OH for the three days in June. Boy what a show it was! There were about 50 steam powered engines there. With all the things going on, it was hard to see it all, but we did our best! Charles Burkholder was there with his Silver Kings (4 tractors). Also, Richard Prill was there with his model A John Deere and his 316 that he purchased from the club. What great looking tractors Richard had. He also made up a three point from a trailer plow that was on the back of the model A... great job Richard. Well I think I talked long enough. Keep the "green and yellow" going!

Ron



# UPCOMING EVENTS

## MEETING SCHEDULE

- **The July General Meeting will not take place because of the Club Show on Sat the 31st!**
- **See BELOW for more meeting information!**
- **Director's Meetings** are held on the first Thursday of every month. Everyone is welcome. These meetings are where much of the club plans are made. If you have a suggestion, comment, etc. please contact your county's director or come to the meeting. Your input is **ALWAYS** welcome!
- **The AUGUST Director's Meeting will not take place. August has no Club Meeting either. That is the Chelsea Parade day! (Aug. 28th)**
- **Jack and Rona Hintz will host the SEPTEMBER Director's meeting on Thursday, Sept. 2nd at 7:00 p.m.**

## Club Meetings for 2010

January	Thank You/Welcome Appreciation Potluck
February	"What is it?" Show & Tell
March 20	Leckler's Open House and our meeting afterward
April 24	Possible Plow Day then meeting
May 22	CANCELED
June 19	YES! A MEETING! June 19th @ the Park's!
July 31st	Club Show with meeting !!!
August	NO MEETING
September 25	Elections, Soup, and Pie
October 23	Halloween Party
November	NO MEETING
December 11	Christmas Party !!!



Please remember that these are tentative plans and subject to change.  
Check the latest newsletter for exact dates and locations!

Come Ride With US!!! The club members participate in some parades during the summer months, including:

Ypsilanti Heritage Parade - Aug 21st

Chelsea Fair Parade - Aug 28th

New Boston Applefest Parade - Oct 2nd



FOR SALEFOR SALE

## FOR SALE FOR SALE FOR SALE

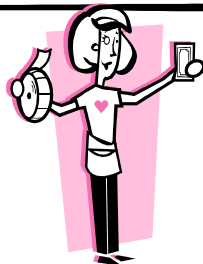
- \* 1950 AR, new rubber, many new parts. \$5,000 or best. Contact Bob Sears at 734-697-8415.
- \* Hay wagon for sale. Bob Sears 734-597-8415.
- \* 1971 John Deere 4320 Turbo Charged Diesel tractor with a rollbar, syncro transmission, front fenders, and 3 pt. hitch with quick hitch. Rear tires are 18.4 x 38. This tractor is restored, with about 300 hours after re-build. Contact Jim at 734-777-5735.
- \* LADIES If you sew... 6 J.D. Bar B.Q Apron Panels \$2.50 each ... 21 Double Pillow Panels \$2.00 per pillow ... 2 1/2 yards of J.D. Material \$4.00 ... Call Candi @ 734-417-7758 or email [c92y86@provide.net](mailto:c92y86@provide.net)
- \* Past Green Magazine \$1.00 each ... Call Candi @ 734-417-7758 or email [c92y86@provide.net](mailto:c92y86@provide.net)
- \* 1955 John Deere 40 Standard, 3 pt. hitch, great running tractor, tires 80%, older restoration. Price \$4,250 or best offer. Contact Sam @ 734-483-7599.
- \* 1944 John Deere B... rebuilt motor, good tires, runs well. \$1800. Contact Ron @ 734-326-0446.
- \* 1949 John Deere A for sale! New aluminum pistons 90 over. Runs well. \$1800. Call Ron Love at 734-326-0446 for more information.
- \* "PARTING OUT" an A, B, G, 630, 70, 720, MT, H, 720D, 730G... Call Nate Girbach at 734-260-9312 for more info.!
- \* 1958 John Deere 520 runs good, 3pt, power steering, easy restoration. \$4000.00 OBO Call Nate Girbach at 734-260-9312 for more info.!
- \* 2 John Deere 2-14 mechanical lift plows, ready to go. \$400.00 choice. Call Nate Girbach at 734-260-9312 for more info.!
- \* John Deere round tube wide front, nice, will fit A,B,G,50,60,70,520,620,720,530,630,730. \$900.00. Call Nate Girbach at 734-260-9312 for more info.!
- \* Aftermarket 3 point hitch, very nice, hardly used. Fits A, B, G, 50, 60, and 70. \$500.00 OBO. Call Nate Girbach at 734-260-9312 for more info.!
- \* Aftermarket 3 point hitch, very nice. Fit 520,620,720,530,630,730. \$400.00 OBO. Call Nate Girbach at 734-260-9312 for more info.!
- \* Farmall/ International Wheel weights, half weights and wholes. \$30/each on halves, and \$55/each on wholes. Call Nate Girbach at 734-260-9312 for more info.!
- \* 1952 Allis Chalmers Tractor with belly mower and a bucket. 4 cylinder engine. No 3 pt. hitch. \$2500. Please call George Davinich at 734-395-4613 for more details!
- \* John Deere 3-14 trailer plow hydraulic lift needs a little work. \$400... Call Nate at 734-260-9312!
- \* 1950 Model B, nice paint, newer tires, runs good, just converted to 12-Volts with correct generator to look original. \$2500 Call Nate Girbach at 734-260-9312 for more info.!

**NOTE: If your FOR SALE item sells, please call or email me to let me know! Thanks, Cari**

Are you checking our club's website often? Well... on the website is a link to THIS newsletter. Check it out!

<http://semichtwocylclub.org/>

If you are interested in having this newsletter emailed directly to you, instead of getting a paper copy, please send an email to Cari Fry at [clf215@aol.com](mailto:clf215@aol.com). NOTE: It is created in Publisher - Office 2007.



### HELP WANTED!

We are looking for someone to take over the 50/50 Raffle duties at monthly meetings! Ron Love, as president, will have his hands full this year... so... ANY VOLUNTEERS? Please call Ron at 734-326-0446 for details.

The 4H Club will be hosting a **TRACTOR SAFETY CLASS** at the Saline Fair Grounds on Friday, July 30th at 12:00pm. Bob Robson will be teaching the class.

**SHOWS \* FAIRS \* SHOWS  
FAIRS \* SHOWS \* FAIRS**

July 31	Antique Tractor Show Sumpter (club show)
Aug. 1-7	Monroe County Fair
Aug. 19-22	Buckley Old Engine Show, Oakley Show
Aug. 24-28	Chelsea Fair
Aug. 25-28	Antique Engine & Tractor Show, Portland, IN

**THINK YOU KNOW YOUR JOHN DEERE  
LAWN & GARDEN TRIVIA?**

The plant that manufactures the X-series  
Lawn & Garden Tractors formerly produced  
what?

- Mowing Machines
- Utility Tractors
- Grain Drills

(Answer in next month's newsletter!)

Last month's answer was b) 1963

Did you get it right?



MARK THIS DOWN!!!



**CLUB TRACTOR SHOW  
AT THE  
ROMULUS PUMPKIN FESTIVAL  
SUNDAY, SEPT. 19TH, 2010**



Nominations for board positions will be  
accepted starting in July.  
Please submit names of  
nominees to any director. See  
left side of page one of the  
newsletter for positions.



# Did you know...

- ... The **"Adopt-A-Family" bucket** is passed around at every Genera
- ... l Club Meeting. We "Adopt" a family during the holidays as our way of giving back to the community. Please consider dropping a few dollars and spare change in the bucket!
- ... that the **club store** has items that would make great gifts? Contact JOSH SMITH if you have questions about store merchandise (734-427-8975).
- ... that the club has a **video library**? For rentals, or to loan your own videos out, please contact Judy Park at 734-457-2591.
- ... ALL NEWSLETTER SUBMISSIONS ARE NEEDED BY THE **10th OF THE MONTH**. Please email Cari ... clf215@aol.com with your NEWS!!!
- ... that you are allowed to **copy and hand out this newsletter** to anyone who might be interested in our club? It's great to spread the word!
- ... that the **Tri-County Two-Cylinder Club of Michigan** has one of THE BEST tractor club websites around! All of the information in this newsletter can be found there!

<http://semichtwocylclub.org/>